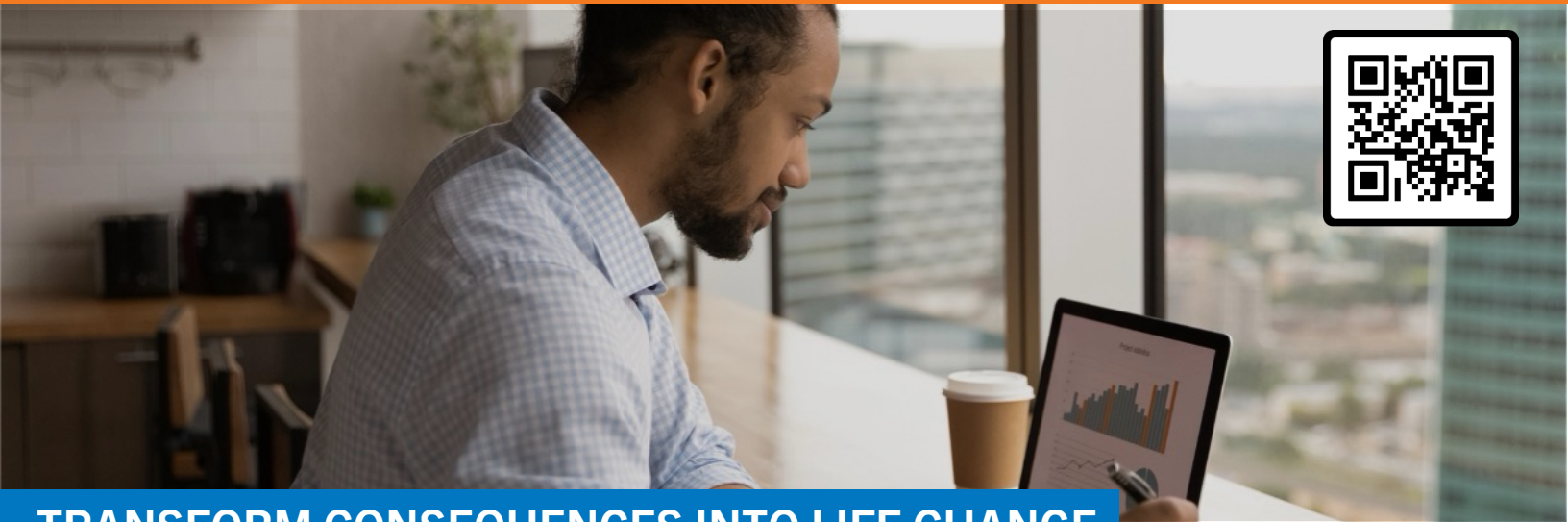




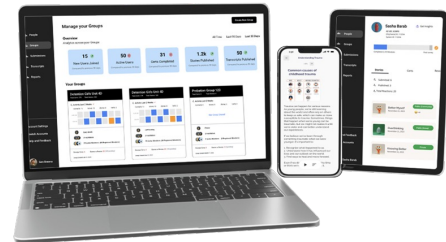
AI-POWERED, BEHAVIORAL CHANGE

# A NEXT-GENERATION SOLUTION FOR JUSTICE CLIENTS



## TRANSFORM CONSEQUENCES INTO LIFE CHANGE

- EVIDENCE-BASED THERAPEUTIC FRAMEWORK
- ANYTIME, ANYWHERE GROWTH PLATFORM
- COME ALONGSIDE GROWTH SPECIALISTS
- AI-POWERED CASE MANAGEMENT SUITE



At Lifelab Studios, ... We believe every person has the potential to grow, heal, and transform—but only when they're truly seen, supported, and empowered. **We provide the tools to make that happen.**

### Anywhere Growth

Behavioral Change journeys, available anytime, anywhere

### Anywhere Coaching

Trained coaches that guide, motivate, and support

### Anywhere Personalization

AI tools help surface insights and tailor growth for every learner

**Journey.do is ...** a full-service behavioral change program with generative and agentic AI, real-time data, any-time, anywhere access, and with trained staff that run the program from intake to outtake, so your clients transform into contributing members of society.

## REAL WORLD RESULTS

**75,000+**

User Accounts

**125,000+**

Story Connections

**70,000+**

Stories Published

**125,000+**

Grows Completed

**55,000+**

Microcerts Earned

# OUR BEHAVIORAL CHANGE PROGRAMS

## Research-Based Framework

Our **Journey Arc™**, based on behavioral-change research, combines evidence-based practices, advanced AI, and a next-generation growth app to ensure individuals feel **seen, valued, and supported** on their growth journey.



- Grounded in our research-based behavioral change framework, every person receives the same **quality of care** from intake to intake.
- Growth is supported by trained coaches providing strength-based feedback and personalized care, using evidence-based practices enhanced by AI, to ensure quality and consistency of care.

## EACH JOURNEY INCLUDES:



### 01 INTAKE MEETING

1:1 Meeting to build rapport, identify needs, set goals, and onboard user.

### 03 CERTIFICATE ONE

First major achievement recognized when individual completes desired number of Modules in an area.

### 05 TRANSITION PLAN

Summary of achievements, challenges, and next-steps transition plan.

### 02 GROWTH PLAN

Customized roadmap with a targeted and responsive plan that is shareable.

### 04 CERTIFICATE TWO

If multiple certificates expected, each has a significant milestone based on completing expected Modules.

### 06 OUTTAKE MEETING

Final session to affirm success, discuss challenges, and transition.

## Available Growth Certificates

Our **8 Protective Factor Certificates** are aligned to the most common **criminogenic needs**. These Certificates, and nested growth **Modules**, are available across all contexts of care (**detention, probation, diversion**) with separate journeys for **youth, emerging adults** and **adults**.

- Specialty programs such as gun safety, career readiness, adult re-entry and staff professional development are also available.
- Each **program** includes a **personalized growth plan, coaching services, AI insights, and digital portfolios** of achievements.

### ○ Protective Factors

- Pro Social Skills
- Physical & Mental Health
- Education & Employment
- Substance Avoidance
- Attitudes, Values, & Beliefs
- Improving Family Relations
- Peer & Social Support
- Taking Responsibility

### ○ Other Youth Justice

- Gun Safety
- Career Readiness
- Substance Prevention
- Remanded Youth
- Teen Parenting

### ○ Staff Development JSP

- JSP Referee to Coach
- Evidence-Based Practices

### ○ Other Adult Justice

- Prison Re-Entry
- Financial Readiness
- Adulting 101
- Jail Shift
- Gun Safety

### ○ Build Your Own

- Custom Journeys



# AI-ENHANCED COACHING SUITE

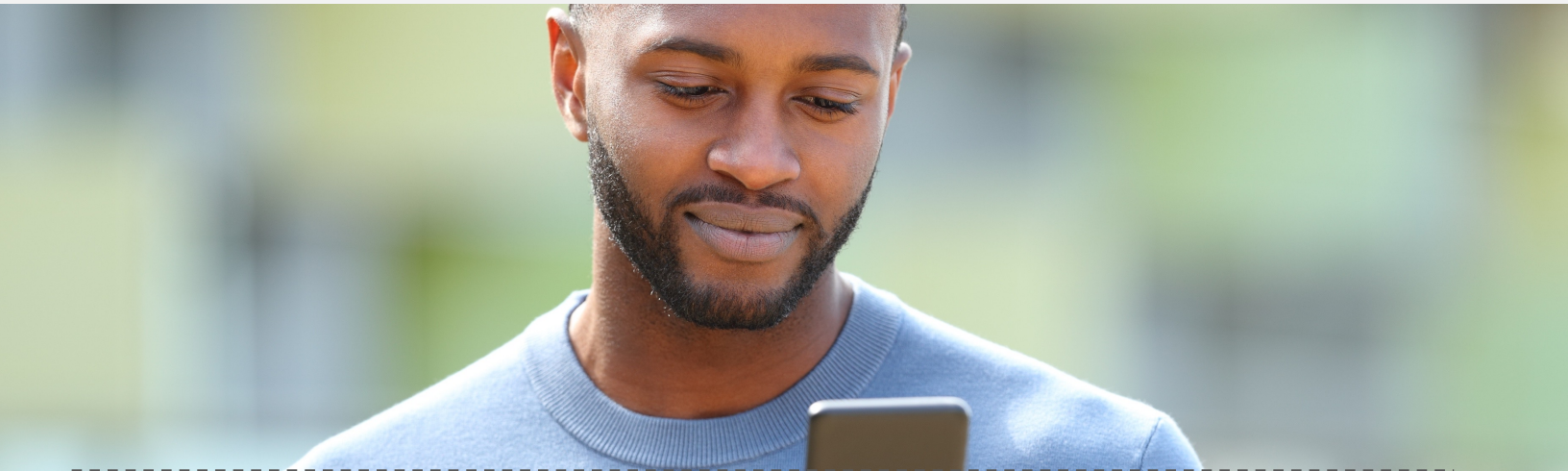
AI is transforming every industry — and now it's revolutionizing probation and corrections. Behavioral change is hard, but our **AI-powered coaching suite and next-generation growth platform** make it faster, easier, and more effective than ever.

- This is more than case management — **it's a new era of accountable care** where every interaction **drives measurable progress** and **lasting change**.
- With our **AI suite**, justice professionals not only **save hours of administrative work**, but are able to **deliver personalized, high-quality** case planning, notetaking, and insight generation. Our AI integration keeps **human connection at the core**, and ensures change happens.

## Next Generation Case Management Tools

Built for today's supervision realities, these tools **turn paperwork into progress — inspiring transformation, strengthening relationships, and accelerating growth.**

From intake to outtake, this system **ensures alignment with supervision goals, supports accountability and deepens impact.**



### 1 AI Case Planner

- ✓ Auto-generates growth plans from interviews or transcripts
- ✓ Aligns with agency frameworks and transition goals
- ✓ Fully editable with version history and e-signature export
- ✓ Auto-converts plans into transition portfolios

### 2 AI Notetaker

- ✓ Transforms any client session into structured case notes
- ✓ Reinforces supervision objectives with linked guidance
- ✓ Offers coaching prompts, reflections, and activity suggestions
- ✓ Suggests staff development needs based on client trends

### 3 AI Insight Generator

- ✓ Summarizes strengths, needs, risks, and areas of focus
- ✓ Aligns progress to case plan goals and suggests next steps
- ✓ Surfaces trends across individuals or to inform supervision and policy
- ✓ Provides just-in-time staff development based on client needs

This technology changes the game. Every **contact, every note, every plan** becomes a deliberate step toward positive behavioral change. Combining the speed and precision of AI with a **human-centered growth platform**, we transform documentation into insight, and insight into action — moving supervision beyond compliance to **true life transformation.**



# PROGRAM INTEGRATION

## ANYTIME, ANYWHERE PERSONALIZED CARE

We build a customized platform instance with private groups tailored to your needs, managed by your staff or ours. Groups can be organized by officer, unit, or topic for seamless support from start to finish. Members are then assigned to groups where they experience anytime, anywhere, personalized care from intake to outcome.



You decide group structure, and which programs are relevant to these groups.



Individuals are assigned to groups and supported from intake to outcome with personalized care.



You have oversight, transparency, and AI insights through our champion dashboard.

## HOW WE INTEGRATE

1

**White-Label Platform Setup.** We start you with a customized, county-specific instance of the platform branded for your organization, with private groups based on your organizational structures. Programs can be assigned to specific groups or individuals, ensuring tailored and secure access.

2

**Each Person Assigned to Our Care Receives:**

a

**Individual Registration and Intake.** Participants are registered within designated groups and gain access to relevant programs. Most begin with an intake meeting, led by our staff or yours, to create a personalized plan.

b

**Anytime, Anywhere Platform Support.** Participants use the platform to complete targeted modules, connecting with peer stories, leveling up their skills, and receiving strength-based feedback. Using our AI-enhanced coaching dashboard, you can monitor progress, provide support, and access real-time insights.

c

**Completion and Transition Planning.** Participants earn downloadable certificates for milestones achieved. An AI-enhanced, shareable transition plan highlights accomplishments and outlines next steps to ensure success.

3

**Ongoing Staff Access and Reporting.** Your staff and organization have continuous access to the coaching dashboard to track progress, provide support, and generate reports at the individual, group, or organizational level.

Your staff have access to a comprehensive dashboard that offers AI-driven insights, tracks progress in real-time and provides data transparency to your staff across all 3 journeys.

## ABOUT US

**Lifelab Studios** is a spin-out of Arizona State University and is led by a team of learning scientists, platform engineers, growth specialists, and successful entrepreneurs.

### We Believe that

Personal growth is critical for life success and fulfillment, and that everyone has the potential to do amazing things.

### We are committed to

Providing clients the best social growth platform in the world, supported in a manner to ensure personal growth.

### We are deeply passionate

About powering personal growth through small group journeys where members are seen, valued, and validated for their efforts.



LEARN MORE



**Lifelab**  
STUDIOS

A personal growth and wellness company.

Makers of



**journey.do**